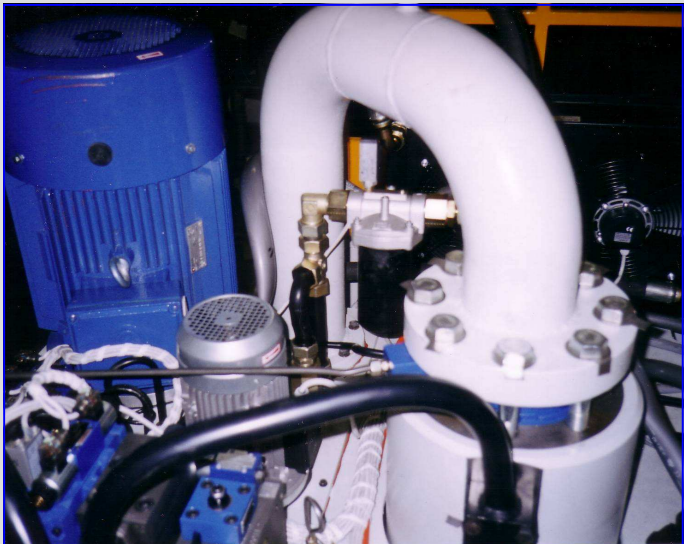


SHEET METAL MEN s.r.l.

HYDRAULIC PRESSES SERIES SMO - SMCO



HYDRAULIC DOUBLE HOUSING PRESSES CHARACTERISTICS

PRESS TYPE		SMO 1600	SMO 2000	SMO 3000	SMO 4000
Max slide capacity	kN	1600	2000	3000	4000
Table and slide dimensions	mm x mm	1000 x 800	1200 x 1100	1400 x 1200	1600 x 1400
Opening in the housings	mm x mm	400 x 500	600 x 600	800 x 700	800 x 700
Slide max stroke	mm	650	650	800	800
Max distance table-slide	mm	1000	1000	1200	1300
Max cushion capacity	kN	800	1000	1500	2000
Cushion area	mm x mm	900 x 700	900 x 700	1100 x 1000	1100 x 1000
Cushion max stroke	mm	300	300	400	400
Ejector max stroke	mm	200	200	250	250
Rapid advance of slide	mm/sec	410	430	310	370
Rapid return of slide	mm/sec	315	380	370	365
Work speed max/min	mm/sec	45/25	35/24	40/22	45/19
Rapid return of cushion	mm/sec	90	95	98	85
Main motor power	kW	37	45	60	75
Weight	kg.	12000	14000	24000	32000

HYDRAULIC C-FRAME PRESSES CHARACTERISTICS

PRESS TYPE		SMCO 400	SMCO 800	SMCO 1200	SMCO 1200
Max slide capacity	kN	400	800	1200	1600
Table and slide dimensions	mm x mm	650 X 500	750 X 600	950 X 750	1000x800
Opening in the housings	mm x mm	550 X 450	650 X 500	850 X 650	1000x800
Slide max stroke	mm	400	400	600	650
Max distance table-slide	mm	700	700	900	950
Throat	mm	310	360	420	450
Max cushion capacity	kN	200	400	600	800
Cushion area	mm x mm	450 x 425	500 x 500	650 x 600	650x650
Cushion max stroke	mm	200	200	250	300
Ejector max stroke	mm	150	150	150	200
Rapid advance of slide	mm/sec	450	350	450	430
Rapid return of slide	mm/sec	350	380	440	500
Work speed max/min	mm/sec	70/25	55/17	53/16	54/26
Rapid return of cushion	mm/sec	140	110	105	105
Main motor power	kW	11	15	22	45
Weight	kg.	3500	6000	11000	16000

Notes: SHEET METAL MEN shall (at any moment and without notice) make modifications for the improvement of the product.

SHEET METAL MEN s.r.l.

Via Luigi Cazzola, 35/E - 36015 Schio (VI) - Italy
 Tel. +39 0445 315431 - Fax. +39 0445 319944 -
 E-mail: info@sheetmetalmen.it Web: www.sheetmetalmen.it